

Five Reasons to Choose!



## Major Functions of INFLOW INSOLE

- 01 Highly heat-conductive cutting-edge material**  
The heat-conductive graphite for isothermal accumulation.
- 02 Blood circulation**  
Isothermal accumulation improves blood circulation by 15% in the veins.
- 03 Feet fatigue relief**  
Improves the feet temperature and blood circulation to relieve fatigue for the feet.
- 04 Feet coldness relief**  
Delivers the body temperature to the tips of toes with high heat conductivity to relieve the symptoms coldness of feet that causes discomfort.
- 05 Improvement of quality of life**  
Inflow Insole restores healthy feet to improve the quality of life.

Globally Acknowledged Reliable Product!

## Registered FDA and imported to Japan



### Registered U.S. FDA

**Product Name**  
MEDICAL INSOLE-INFLOW  
(INFLOW-CF-, cold feet)

**Listing Number**  
D467775

- INFLOW INSOLE has officially been registered with the U.S. FDA.



- MOU with 'Japan Matex' for importation
- Funding raised on 'Camfire', a popular crowd funding platform in Japan, to achieve 116% of final goal.

Registered with the U.S. FDA  
Insoles with patented new technology and material



# INFLOW

## Are you worried about Cold Feet?

Here is a functional insole that applies the highly heat conductive, cutting-edge graphite material unlike regular insoles. It relieves freezing feet and poor concentration of body temperature to warm up down to the toes.

# INFLOW INSOLE Regain Healthy Feet

## Label for the Quality Control and Safety Management of Industrial Products Act

**Product** : INFLOW INSOLE (Functional Insole for Freezing Feet and Feet Fatigue) **Materials** : Graphite, Synthetic Resins, Fabric **Use** : Increases feet temperature and blood circulation to relieve fatigue. **[Types of Materials]**  
**Surface Material** : Polyester(Fabric) **Middle Material** : Graphite+Polytetrafluoroethylene **Bottom Material** : Polyurethane **Sizes** : 3S(225-230mm), SS(235-240), S(245-250), M(255-260), L(265-270), XL(275-280) **Manufacturer** : Asan Precision **Country of Origin** : Korea **Customer Service Center** : 41, 134-beon-gil Hwajeonsandan-2-ro Gangseo-gu, Busan (Hwajeon-dong) / (+82)51-305-9853 **Precautions** : 1. Keep away from direct sunlight or heat and use neutral detergent to wash. 2. Do not twist or crease too much.



# Are you worried about Cold Feet ? Just put on for 10 Minutes to solve your Problem !

Patented new technology and materials for the insole.

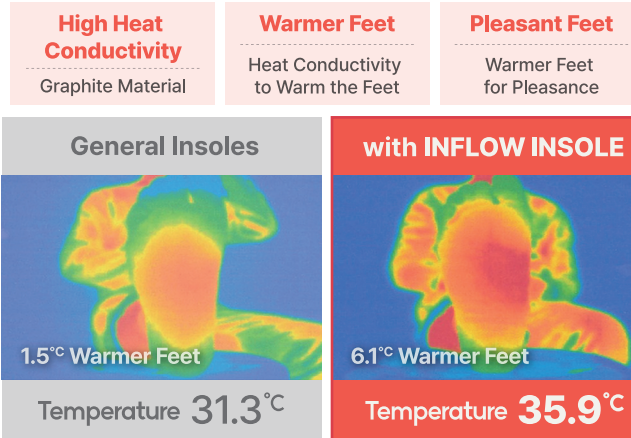


\* The image may be Different from the Actual product.

## Recommended for

- 01 Anyone with cold, freezing feet. ✓
- 02 Anyone who has poor circulation in the feet ✓
- 03 Anyone whose feet swell often. ✓
- 04 Anyone who has pain on the soles. ✓
- 05 Anyone who stays standing for a long time ✓

## The Performance of Inflow Insole You can Experience Fast



Result of testing feet temperature after wearing the insole for 10 minutes when the bare feet were 29.8°C

### Three Steps to Balance Feet Temperature



- 1 Symptoms** The Peripheral blood vessels contract to lower the temperature of feet.
- 2 After wearing** The Feet temperature evens to expand the peripheral blood vessels.
- 3 Improvement** The Peripheral blood vessels expand to increase the speed of blood circulation in the feet.

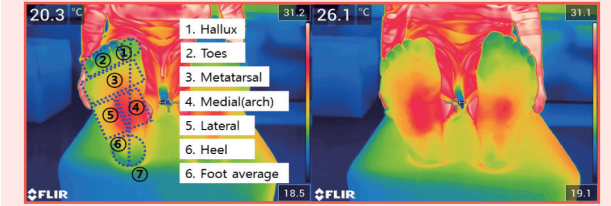
### The Principles of Balancing Feet Temperature

- As blood circulates to the feet through the veins to naturally change the body temperature, the highly heat-conductive graphite ensures the isothermal accumulation of body temperature for the enthalpy effect.
- The average human body temperature is 36.7°C and can be reached within 1-3 minutes without limiting the heat content (internal thermodynamic energy).

## Findings of Clinical tests from Academic seminars

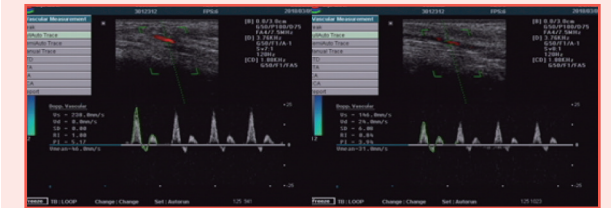
### ✓ FEET TEMPERATURE INCREASED BY 10%

Feet temperature increased by about 10% in average compared to wearing an ordinary insole.



### ✓ 15% FASTER BLOOD CIRCULATION

Blood circulation by 49.9 mm/s in the Posterior tibial artery increased and by 33.3 mm/s in the Brachial artery.



### ✓ IMPROVED SENSORY TEST OF FEET

The Sensory test score decreased compared to wearing ordinary insoles, manifesting that the Feet temperature and Circulation have improved.



- Registered with the 9th World Congress of Biomechanics Taipei
- Findings registered with the 2022 Spring Academic Seminar of the Korean Society for Precision Engineering

(Title - Effects of a thermal insole applied on high thermal conductivity material to cold feet symptoms in foot temperature and blood flow)